



Polydamas Close, London, E3

BUTLER & STAG



Beautifully presented two bedroom flat with a large balcony in a fantastic location, available from the 26th of October.



- Two Double Bedrooms
- 670 sq. ft
- Top Floor (5th) With Lift Access
- Beautifully Presented
- Close To Victoria Pk & Olympic Village
- One Bathroom
- Full-Width Balcony
- Secure Gated Development
- Bike Storage & Communal Roof Terrace
- Great Transport Links

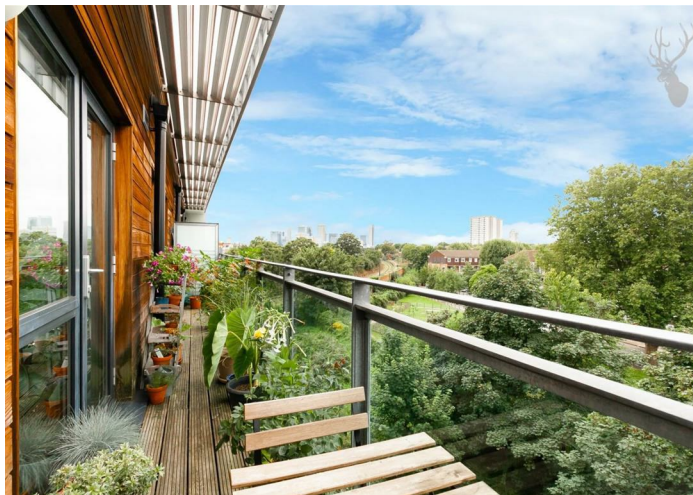
Measuring approximately 670 sq. ft. the property boasts well proportioned accommodation, a full-width private balcony and floor to ceiling windows allowing for a wealth of natural light.

Entering via a large hallway entrance with storage spaces, the property comprises a semi-open plan modern kitchen and reception space that flows out to the balcony with far reaching views. Both bedrooms are generous doubles with the master further benefiting from a fitted wardrobe and a contemporary family bathroom completes the property.

Diagoras House is part of a nearly new gated development with access to a communal roof terrace, video-entry system and secure bike storage.

Located within easy reach of Victoria Park, the Olympic Village and amenities of Roman Road. Multiple transport links are easily accessible including bus routes from Fairfield Road and Bow Road, whilst Bow Road (District and Hammersmith & City), Bow Church DLR and Mile End underground (Central, District and Hammersmith & City) are all close by offering swift and direct access to Canary Wharf, The City and West End.

Council Tax Band D

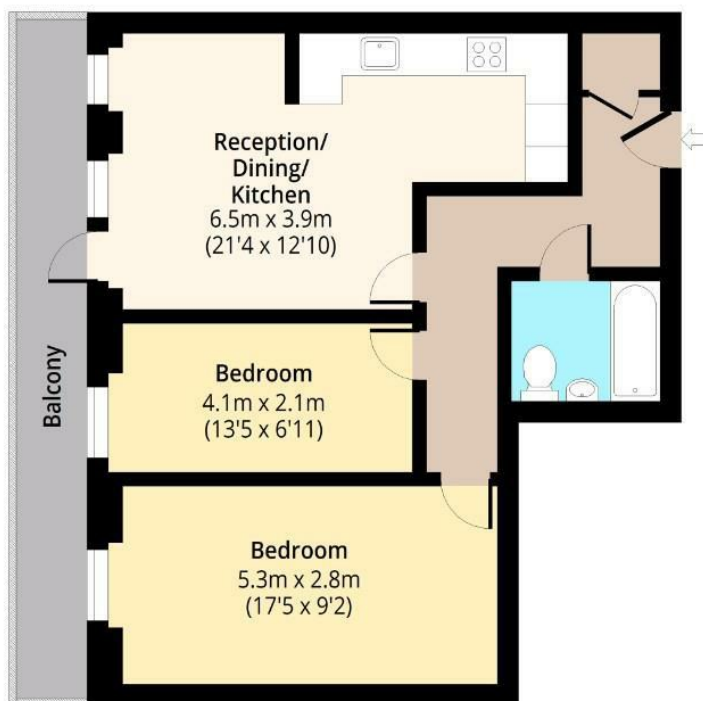




Diagoras House, E3

Fifth Floor

Approx. 62.52 Sq. meters (673 Sq. feet)



Total area: approx. 62.52 Sq. meters (673 Sq. feet)

For illustration purposes only - not to scale

www.lpaplus.com

IMPORTANT NOTICE - These particulars have been prepared in good faith and they are not intended to constitute part of an offer or contract. We have not performed a structural survey on this property and the services, appliances and specific fittings have not been tested. All photographs, measurements, floor plans and distances referred to are given as a guide and should not be relied upon.

BUTLER & STAG

☎ 020 8102 1236

🏠 508 Roman Road, Bow, London, E3 5LU

✉ bow@butlerandstag.com

www.butlerandstag.uk